



English-to-Thai AI Translation: Strengths, Weaknesses, and Best Use Cases

In today's hyperconnected world, breaking down language barriers is more important than ever. This presentation explores the strengths, weaknesses, and best use cases of English-to-Thai AI translation, providing insight into how and when these tools are most effective—and when human expertise remains essential.

Author: Rosen Ivanov

[Connect on LinkedIn](#)

The Complexity of Thai Language

Thai presents unique challenges for AI translation systems:

- Five tones system where pitch changes meaning
- Unique script with no spaces between words
- Social hierarchy embedded in everyday speech
- Simple grammar that hides reliance on context
- Different words based on gender, age, and social status

These complexities make accurate translation more than a matter of words—it requires cultural understanding.



Strengths of English-to-Thai AI Translation



Speed & Accessibility

Near-instantaneous translation of text, voice, and images. Free and mobile-friendly tools make them accessible for casual users.



Everyday Conversation

Modern AI handles informal speech with surprising fluency, providing contextually appropriate translations for casual sentences.



Large-Scale Content

Offers scalability for businesses translating hundreds of product descriptions, blog posts, or user reviews.



Multimodal Integration

Includes voice recognition, handwriting input, and image text extraction for dynamic interactions.

Weaknesses of English-to-Thai AI Translation

Idiomatic & Cultural Nuance Loss

AI struggles with idioms and culturally embedded expressions, often translating them literally and creating confusing output.

Tone & Politeness Inaccuracy

Many AI models default to generic or informal tones, missing the appropriate level of politeness required in Thai social contexts.

Structural Inconsistencies

Syntactic differences often result in awkward or grammatically incorrect Thai sentences that native speakers find unnatural.

Limited Dialect Support

Most AI models are trained only on standard Thai, limiting effectiveness with regional dialects like Isan or Northern Thai.



Best Use Cases: Tourism & E-Commerce

Tourism and Travel

Travelers benefit immensely from AI-powered translation tools for:

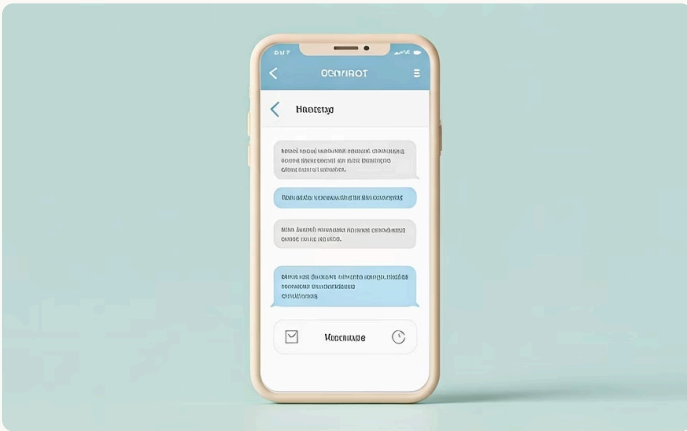
- Reading menus and signs
- Asking for directions
- Booking services
- Real-time voice translation

E-Commerce Localization

AI enables global retailers to tap into Thai-speaking markets by automating translation of:

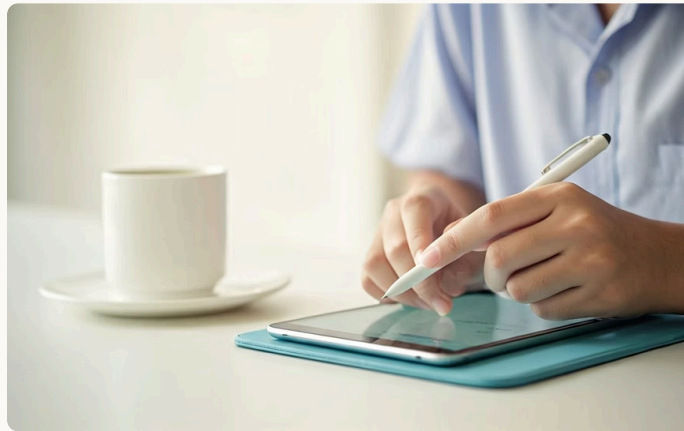
- Product descriptions
- Customer reviews
- FAQs and support content
- Shopping interfaces

Best Use Cases: Support, Education & Media



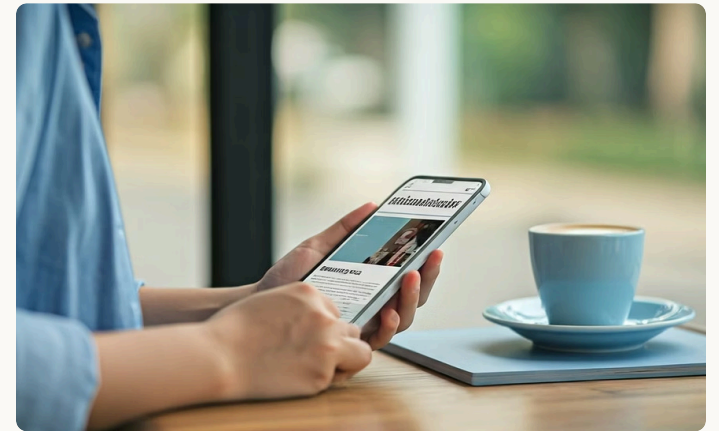
Customer Support Chatbots

Businesses use AI to build multilingual chatbots for routine inquiries and scripted responses, offering scalable customer service in Thai.



Education & eLearning

Students use AI tools to supplement language studies with instant translations, vocabulary definitions, and pronunciation help.



News & Media Consumption

AI translation allows users to access global news or Thai news articles, making core information intelligible across language barriers.



Hybrid Translation: The Smart Middle Ground



AI Translation

Handles bulk or initial drafts with speed and scalability



Human Review

Native speakers refine tone, fix errors, and ensure cultural accuracy



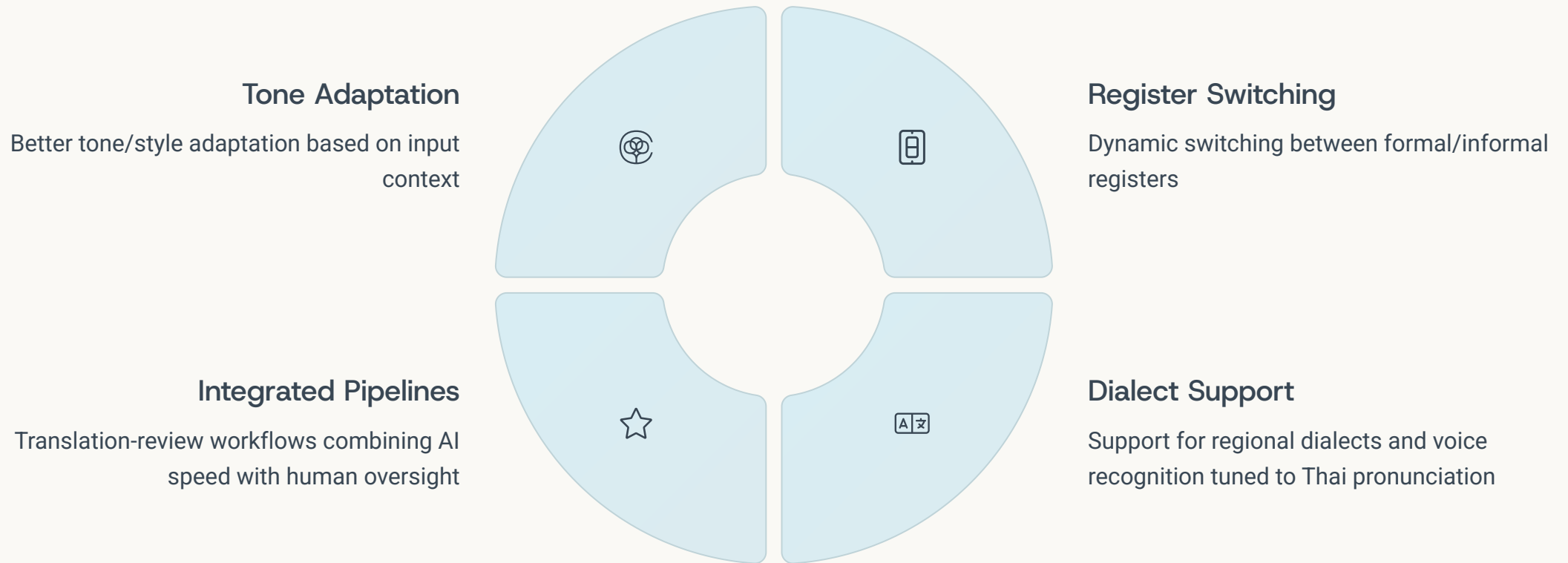
Final Output

Accurate, culturally appropriate content that saves time and cost

This approach is especially valuable for high-visibility content like marketing campaigns, public announcements, or customer support. Human review also provides valuable data that helps improve future AI performance.

The Future of English-to-Thai AI Translation

With the advancement of large language models (LLMs) like GPT-4 and multilingual systems such as Meta's SeamlessM4T, translation is becoming more context-aware, interactive, and fluent.



Conclusion

AI has made remarkable strides in enabling effective English-to-Thai translation for many practical needs—especially in business, tourism, education, and casual conversation.

To get the best results, users should understand when AI translation is sufficient—and when to turn to professional human services. The most effective strategy today is hybrid translation.

As technology progresses, English-to-Thai AI translation will become an even more powerful tool in our global communication toolkit—helping people connect, collaborate, and understand each other like never before.

Get in Touch with 1-StopAsia